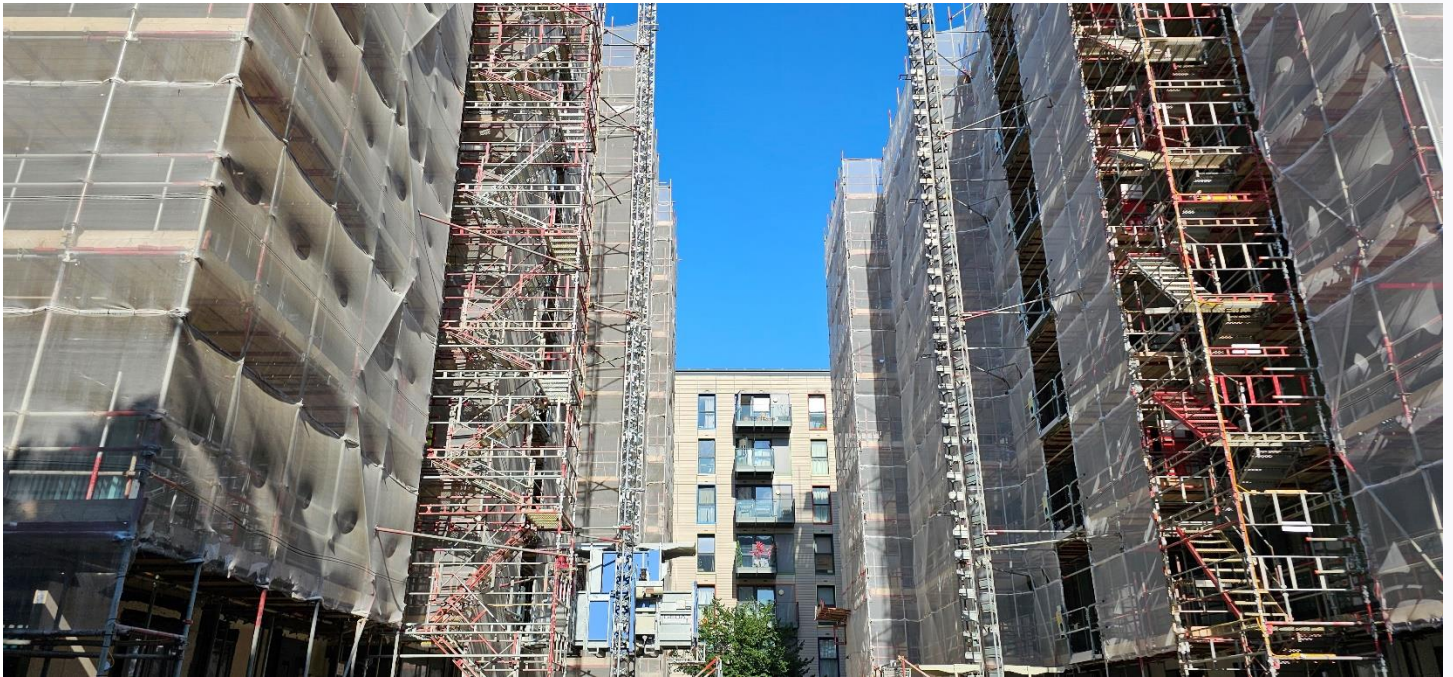


## HALE VILLAGE

### Fire Safety Remediation



## KEY TO NOTE

- Mandatory maintenance of apartment Front Entrance Doors has been progressing well but some residents have yet to confirm an appointment – this will delay the completion of safety critical works and Building Control approval for everyone. Please reach out to [rlo.halevillage@regenfacades.co.uk](mailto:rlo.halevillage@regenfacades.co.uk) to get a visit booked.
- Landscaping reinstatement between Crane and Merlin Heights has been completed.
- Internal Condition Surveys to Eagle Heights have now commenced – these surveys will be taking place between now and the Christmas shut down (20/12/24). Please reach out to Christina via [rlo.halevillage@regenfacades.co.uk](mailto:rlo.halevillage@regenfacades.co.uk) to schedule a visit.
- Façade works to Egret Heights & Kingfisher Heights are ahead of programme.
- Residents should expect some noise disruption during the period as the cladding frame and backing system are fastened directly to the building structure.
- **Contractor Christmas & New Year shutdown between 20/12/24 and 06/01/25.**

## CONTACT INFORMATION

### EMAIL ADDRESS

[rlo.halevillage@regenfacades.co.uk](mailto:rlo.halevillage@regenfacades.co.uk)

### RLO PHONE NUMBER

07719 908 008

### OUT OF HOURS CONTACT

07513 133 234

### WEBSITE & FAQs

[www.halevillage-remedials.co.uk](http://www.halevillage-remedials.co.uk)

### PROJECT OFFICE

Unit 3 Hale Works Apartments,  
Hale Village, N17 9GU

## ANTICIPATED COMPLETION DATES

BLOCK NAME	FAÇADE START	FAÇADE FINISH	EWS1 CERT	INTERNAL START	INTERNAL FINISH
[P1] Crane Heights	2023 January	Completed.	Issued.	2024 July	December 2024
[P2] Merlin Heights	2023 July	Completed.	Issued.	2024 July	December 2024
[P3] Egret Heights	2023 November	2025 Spring	2025 Spring	2024 August	December 2024
[P4] Kingfisher Heights	2023 November	2025 Autumn	2025 Autumn	2024 August	December 2024
[P5] Lapwing Heights	2024 August	2026 Spring	2026 Spring	2024 August	December 2024
[P6] Eagle Heights	2025 Spring	2026 Spring	2026 Spring	2024 August	December 2024

## PROGRESS UPDATE

### Crane Heights & Merlin Heights

Reinstatement of the gardens has been completed.

Internal remediation works to the communal areas have also been completed. Maintenance to Front Entrance Doors is on track to complete in December as planned.

### Egret Heights

Façade remediation to Eagle Heights is ahead of programme and we have revised the completion date to Spring 2025 – we will provide further updates early next year.

At the time of issue, the replacement Carea stone panels are around 50% completed. Installation of the new Rockpanel cladding and decking to balconies should be expected soon.

Residents are advised that these works will be noisy – but to reach out to [rlo.halevillage@regenfacades.co.uk](mailto:rlo.halevillage@regenfacades.co.uk) if you have any concerns as the final works conclude.

Internal remediation works to the communal areas have also been completed. Maintenance to Front Entrance Doors is on track to complete in December as planned.

### Kingfisher Heights

Installation works are underway to Kingfisher Heights (with new Insulation, Cavity Barriers and Cladding Framing being fastened to the building over the coming months).

Residents are reminded to keep balconies clear of personal belongings throughout the remediation works – this ensures a safe area for operatives and reduces delays to safety critical works – thank you for your continued cooperation.

Internal remediation works to the communal areas have also been completed. Maintenance to Front Entrance Doors is on track to complete in December as planned.

### Lapwing Heights

Installation of the new Sheathing Board & EPDM Membranes to openings will continue over the coming period – this will be around 50% completed before the Christmas shutdown.

Access to balconies is being restricted during the construction works using a 'Jackloc' type restrictor – this will prevent access to your balcony but will allow some ventilation.

Residents are advised to be careful on the ramp located at the front entrance during the winter months – this should be used for accessibility access only.

Remaining Internal remediation works to the communal areas will complete shortly. Maintenance to Front Entrance Doors is on track to complete in December.

### Eagle Heights

Regen Facades has been contracted to undertake the façade remediation works at Eagle Heights – we estimate these works to commence from Spring 2025 (due to a new Building Control process via the Building Safety Regulator).

Design and Engineering works that form the Building Control process are underway in the background – as well as planning for the construction phase.

Internal Condition Surveys at Eagle Heights have begun (with around 75% of the apartments booked). Please reach out to [rlo.halevillage@regenfacades.co.uk](mailto:rlo.halevillage@regenfacades.co.uk) to arrange your visit.

### Resident Drop-In Session

The next virtual 'resident drop-in session' will take place on the 22nd January 2025 at 4.30pm – this meeting provides an opportunity to raise questions directly with the construction and stakeholder teams.